

# 6000

**Introduction** • Topworks • Drives

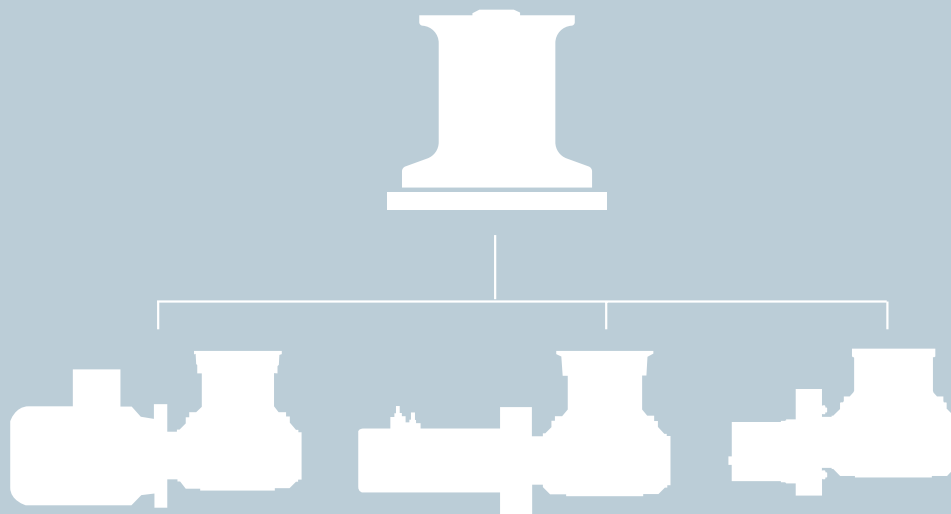


Anchoring Solutions

Windlasses

**Capstans**

Accessories



AC DRIVES

DC DRIVE

HYDRAULIC  
DRIVE



**MAXWELL**

# 6000

Introduction • **Topworks** • Drives

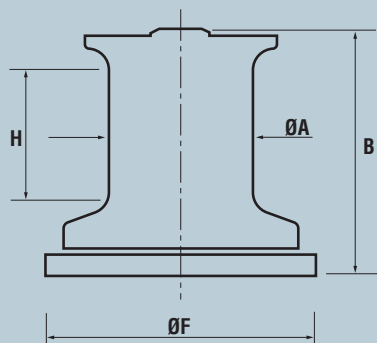


Anchoring Solutions

Windlasses

**Capstans**

Accessories



<b>A</b>	190mm 7 1/2"
----------	-----------------

<b>B</b>	286mm 11 5/16"
----------	-------------------

<b>F</b>	354mm 14"
----------	--------------

<b>H</b>	110mm 4 3/8"
----------	-----------------

**MAXWELL**

# 6000

Introduction • Topworks • Drives



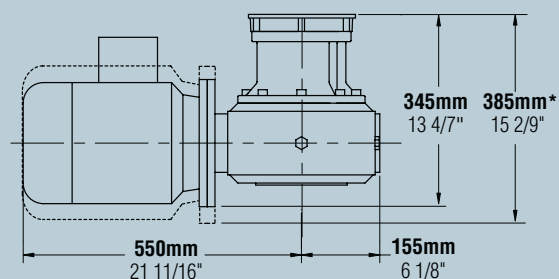
## AC Drive Specifications

Anchoring Solutions

Windlasses

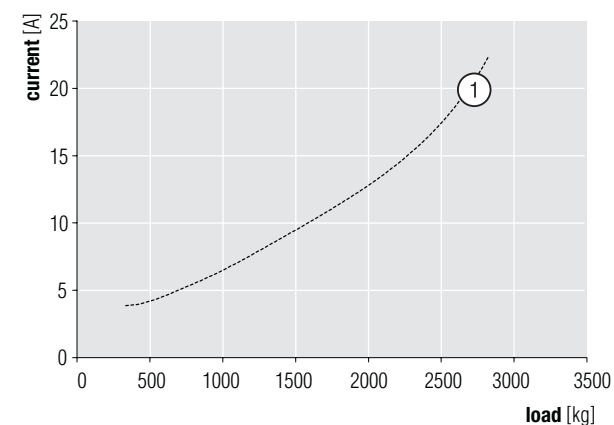
Capstans

Accessories



\* Two Speed Motor

	90° Drive
Line Speed	13 m/min 43 ft/min
Pull Capacity cont. run ①	1286 kg 2829 lb
Pull Capacity stall	2730 kg 6006 lb
Current (@ 400V)	
Rated Load	8.2 A
start DOL	55 A
Motor Power	4 kW 5.5 HP
Weight of Capstan	158 kg 348 lb



90° Drive

NOTE: Performance data are given for 400V 50Hz power supply.  
They may vary for other voltages and frequencies.

# MAXWELL

# 6000

Introduction • Topworks • **Drives**



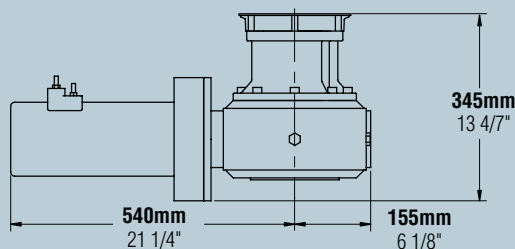
## DC Drive Specifications

Anchoring Solutions

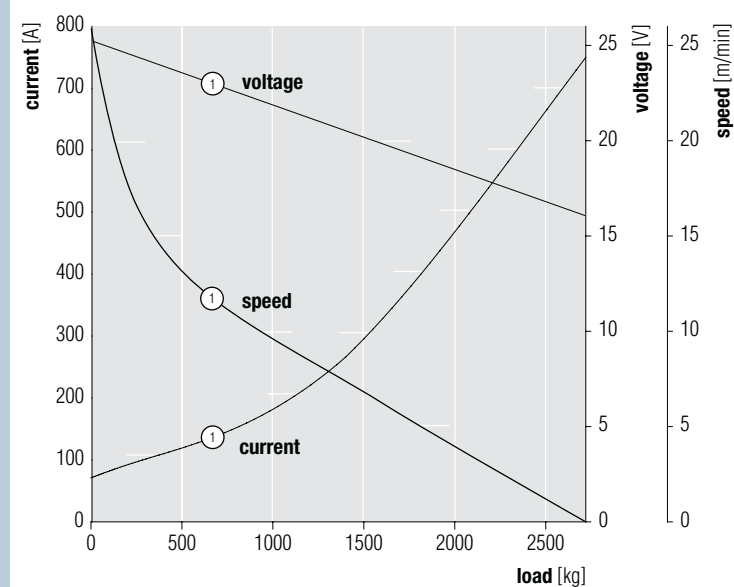
Windlasses

**Capstans**

Accessories



Pull Capacity	680 kg
cont. run (1)	1496 lb
Pull Capacity	2730 kg
stall	6006 lb
Motor Power	3.5 kW
	4.8 HP
Weight of Capstan	124 kg
	273 lb



# MAXWELL

# 6000

Introduction • Topworks • **Drives**



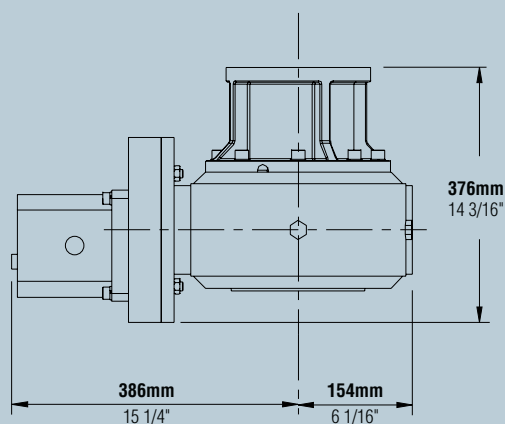
Anchoring Solutions

Windlasses

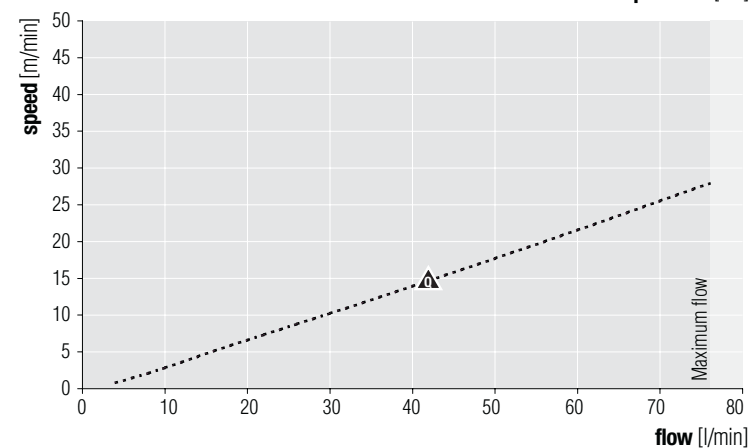
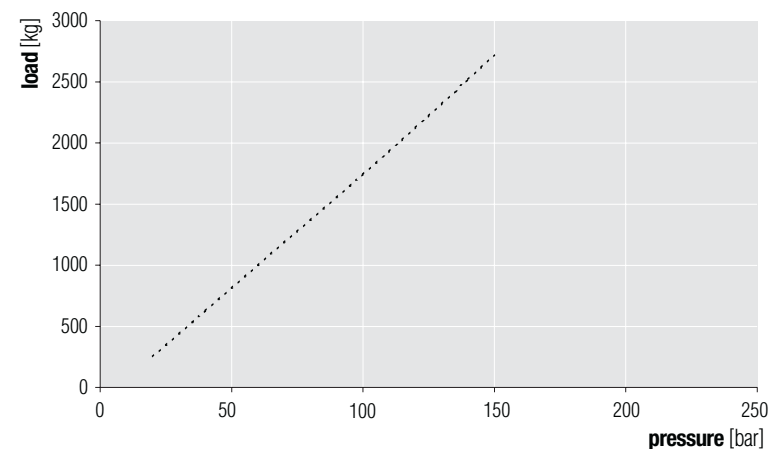
**Capstans**

Accessories

## Hydraulic Drive Specifications



	Medium Flow
Maximum Pressure - $p$	150 bar 2177 psi
Pull Capacity	2727 kg 6000 lb
Recommended Flow - $Q$	41 l/min 11 USgal/min
Line Speed @ $Q$	14 m/min 47 ft/min
Maximum Flow	76 l/min 20 USgal/min
Weight of Capstan	104 kg 229 lb



# MAXWELL